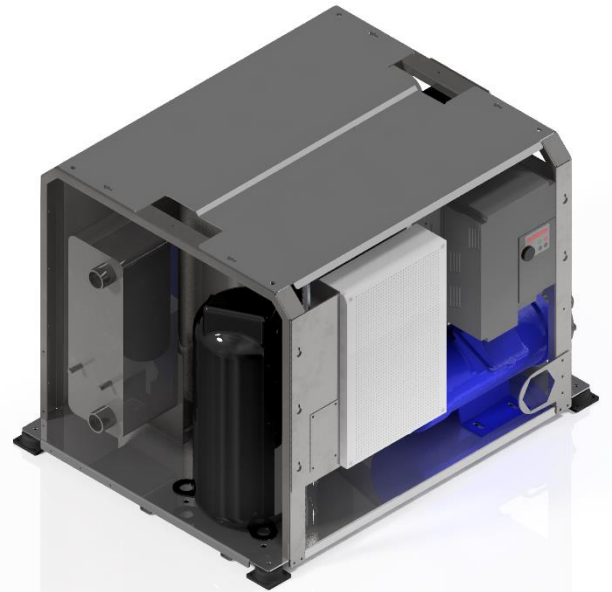


CI20E2

DATASHEET



Cooling capacity KW	min 3	std 18	max 20
Cooling power source KW	min 0,7	std 3	max 5
Heating capacity KW	min 3	std 18	max 22
Heating power source KW	min 0,7	std 3	max 5

Power supply:	180 - 250 Vac 1Phase 50/60Hz 400 Vac and 700 Vdc on request		
Sea water pump:	Magnetic type 300 watt included in unit power consumption. 180 lt/min		
Water pipe size:	1,5"		
Size W x D x H:	704 x 528 x 477 mm		
Weight:	87 Kg		
Sea water working range:	+3°C to +40°C	Option polar water: -5°C	
Air working range:	-20°C to +50°C		
Noise:	Compressor @ 140 hz – 73db @ 1 meter from box		
Vibration:	No significant vibration transmitted to the feet		

Compressor box use VRV inverter architecture with refrigerant circulation inside air handler
Databus rs485 modbus on board

24Volt @ 400watt power supply 24VDC integrated in compressor unit for 10 air handler management

System based on Toshiba VFD and twin rotary compressor



CONDENSER:

Titanium Grade 2. No fouling, no corrosion. 3 times lighter than copper nickel



COMPRESSOR:

Toshiba inverter twin rotary. COP > 4

Rotation speed: 600 to 6000 rpm



FRAME:

Stainless Steel 316



SOFTWARE MANAGEMENT:

Compressor high temperature, low temperature, high pressure condenser, low pressure compressor, electronic pressure gas, electronic pressure liquid, Condensation control, Evaporation control



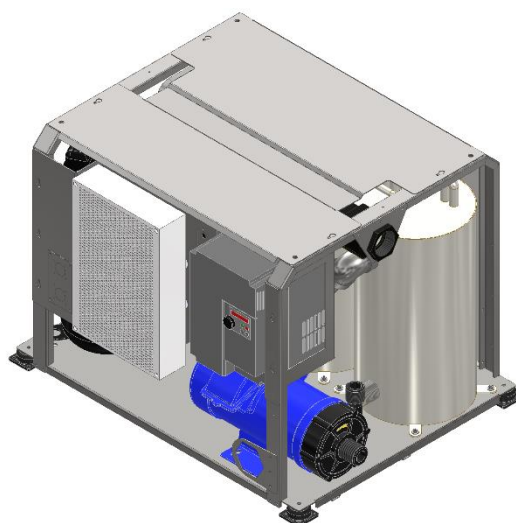
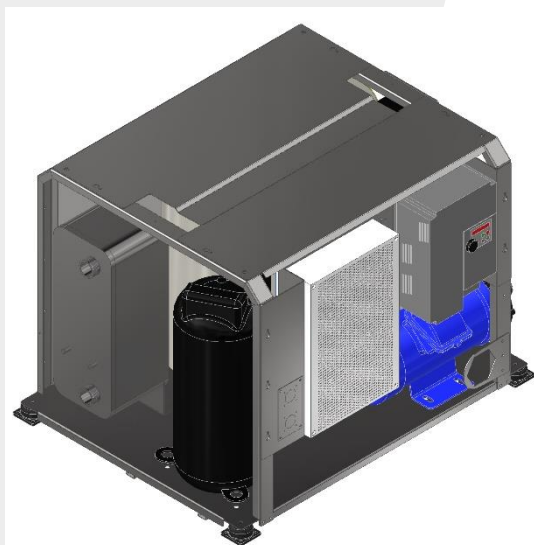
COMPRESSOR PROTECTION:

Over/undervoltage, overcurrent, torque, winding temperature, stepout (bad lubrication), power input, power output, efficiency, overload



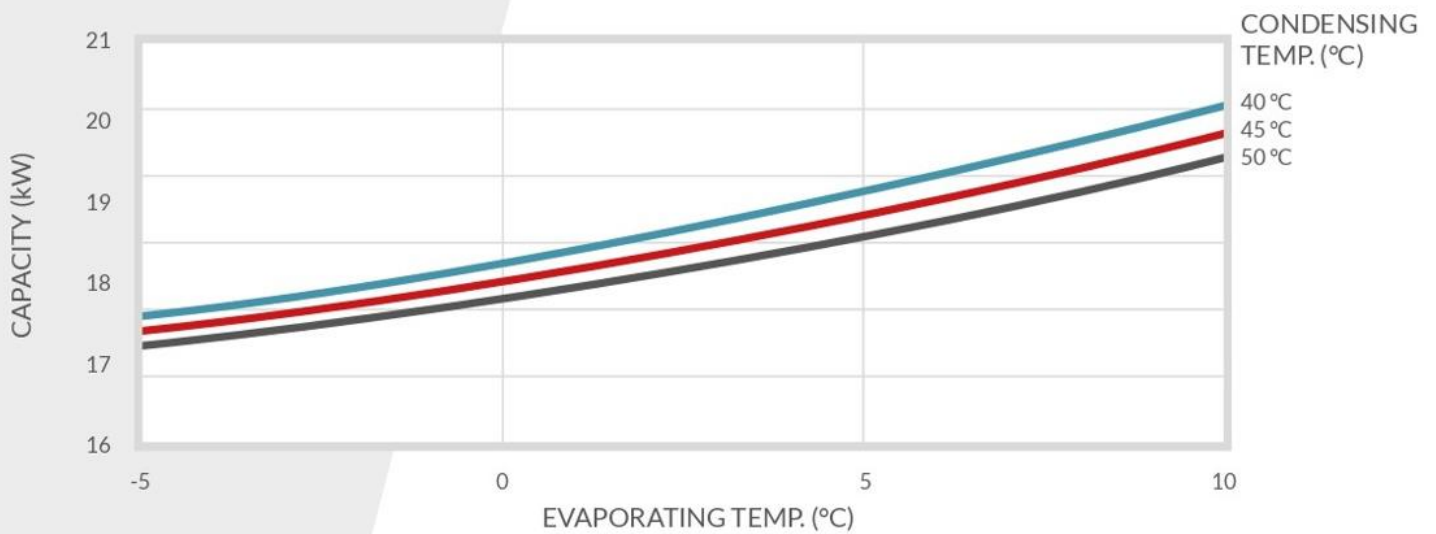
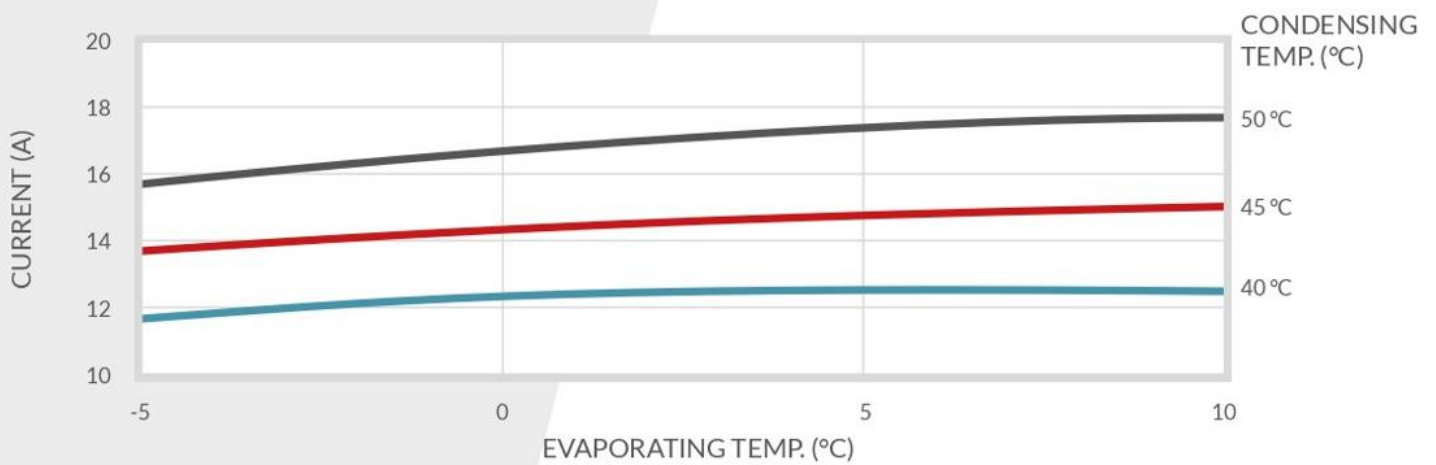
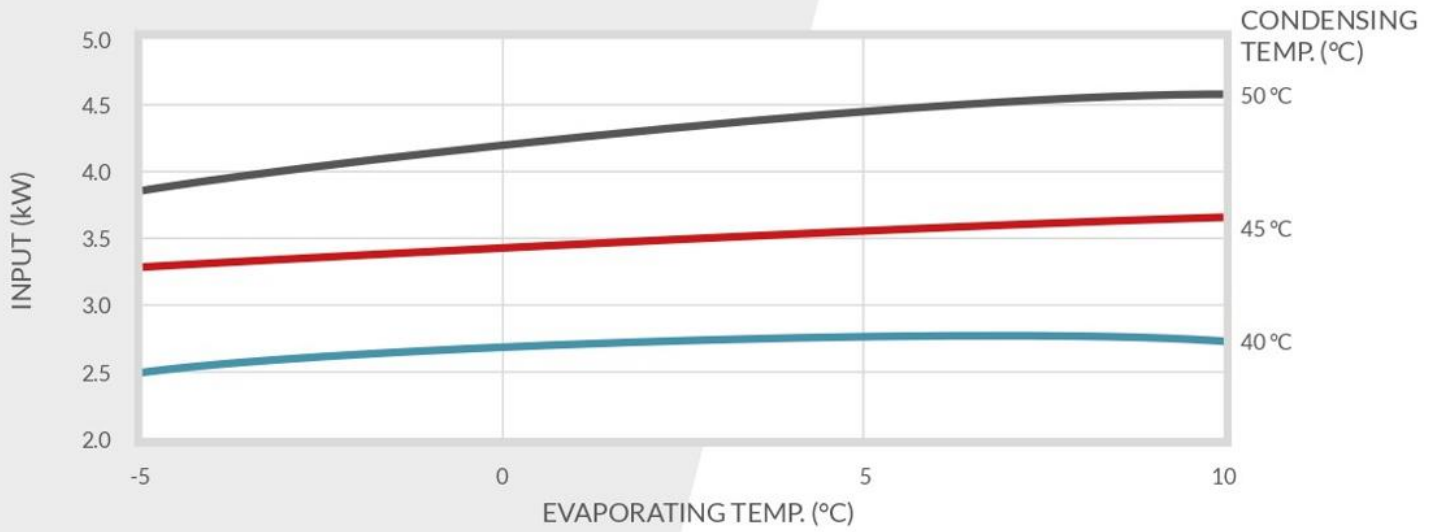
ELECTRONIC:

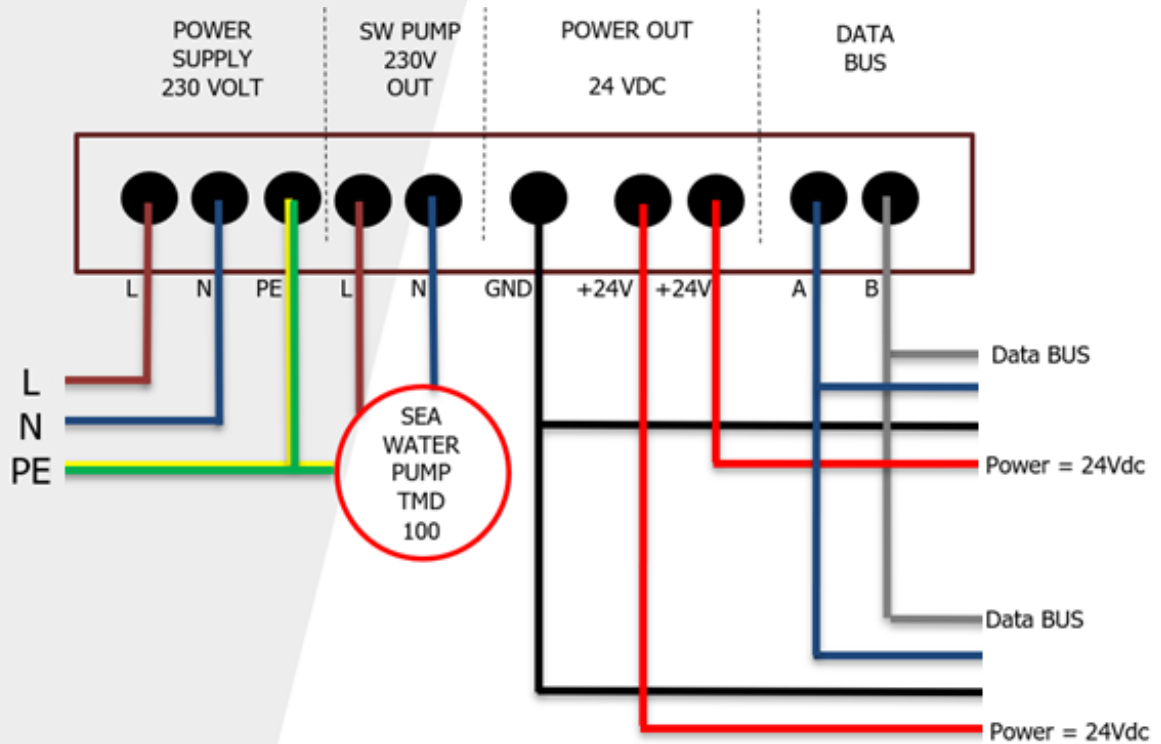
Microprocessor board with rs485 modbus rtu communication. Interface to Termodinamica air handling unit or fresh air unit



CI20E2

PERFORMANCE CURVE DC INVERTER 70 rps/100





CI20E2

OVERALL DIMENSIONS

