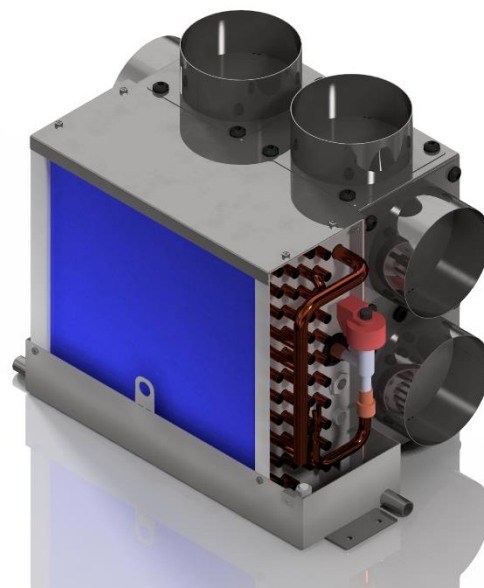


MR MAXI30 AIR HANDLER

DATASHEET



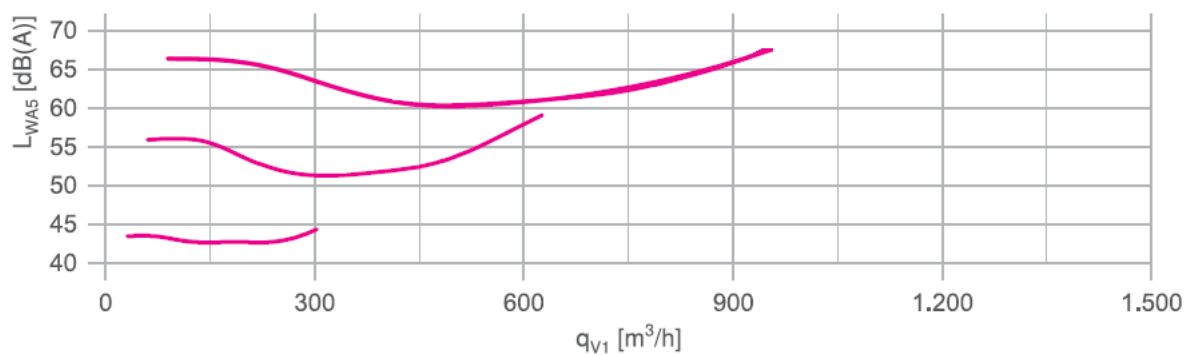
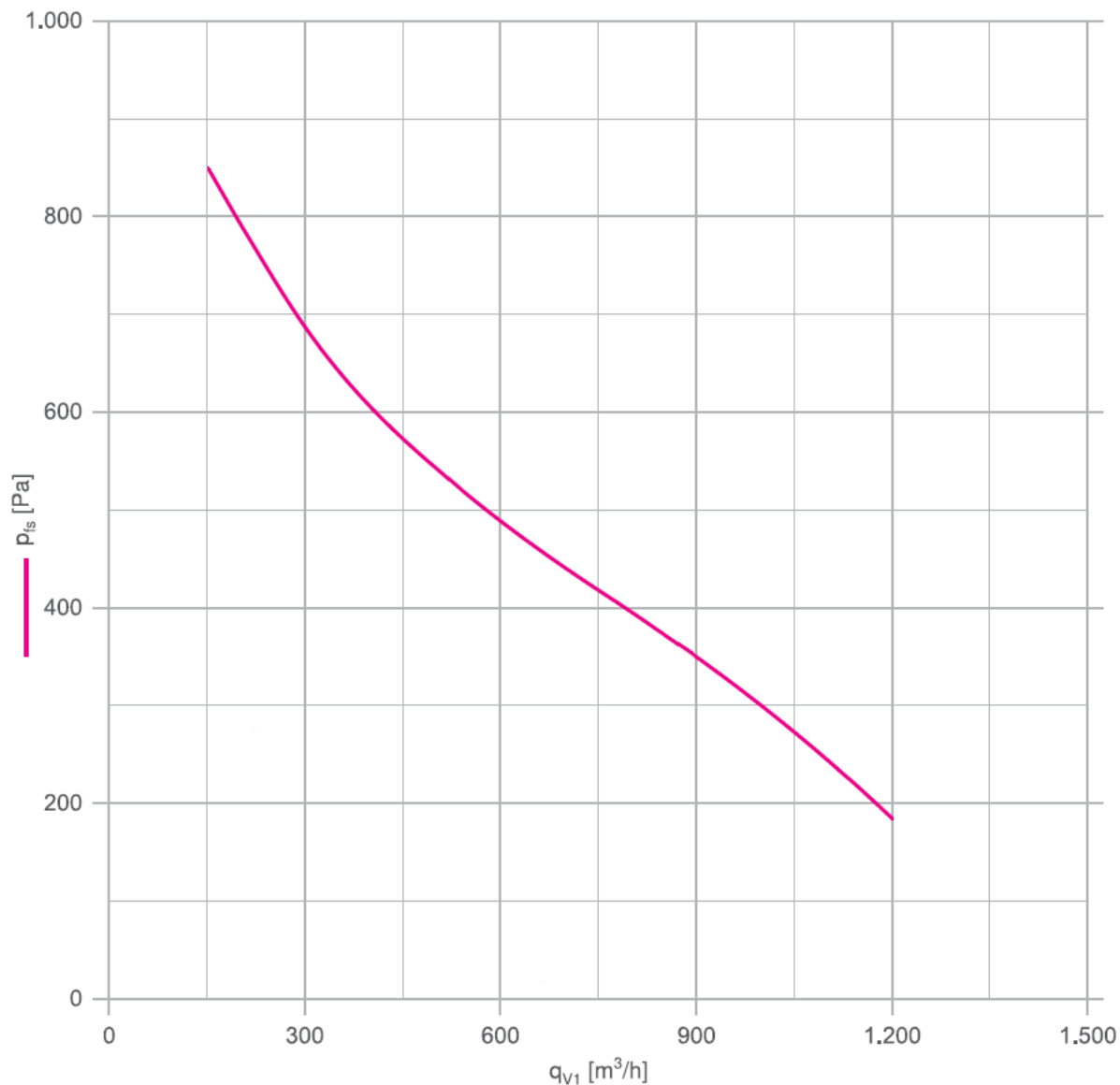
CAPACITY

| | | | |
|-----------------------------|-----|-----|------|
| Air flow m ³ / h | 100 | 750 | 1200 |
| Cooling Kw | 1,0 | 5,0 | 8,0 |
| Heating Kw | 1,0 | 5,0 | 8,0 |

| | |
|---------------------------|--------------------------------|
| Static pressure: | 800 Pa |
| Power supply: | 230 Vac 50/60 Hz |
| Power consumption: | 100 W (typical) – 170 W (max) |
| Control: | Data bus rs485 Modbus RTU |
| Size W x D x H: | 444 x 286 x 362 mm |
| Weight: | 9 Kg |
| Frame: | Stainless steel 316 |
| Air working range: | -20°C to +50°C |
| Noise: | 10 dB (night mode) - 65 dB max |
| Vibration: | No significant vibration |
| Air duct size mm: | 2 x 125 |
| Refrigerant pipe: | 1/2" Gas 3/8" Liquid |

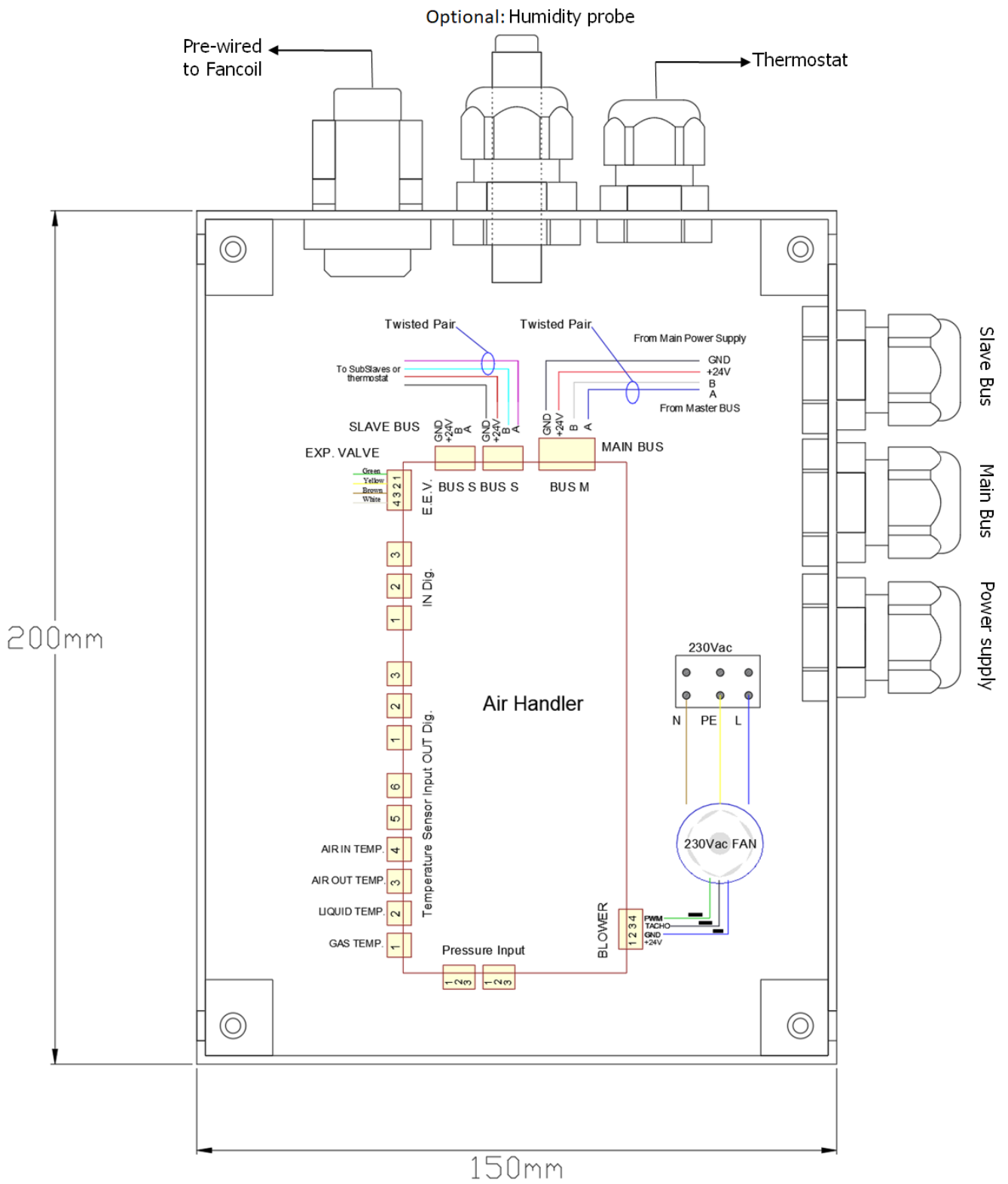
MR MAXI30

FAN PERFORMANCE



MR MAXI30

ELECTRICAL CONNECTIONS



MR MAXI30

OVERALL DIMENSIONS

