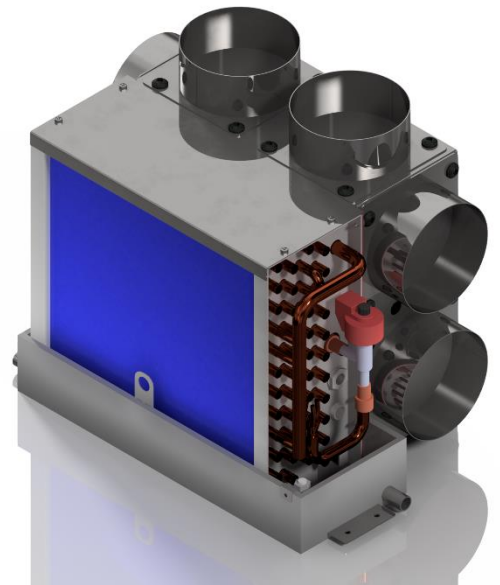


AHU1000T

DATASHEET



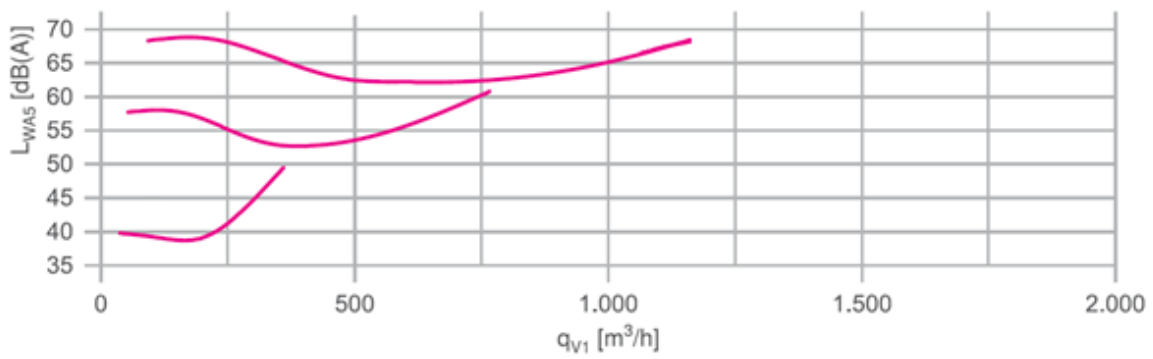
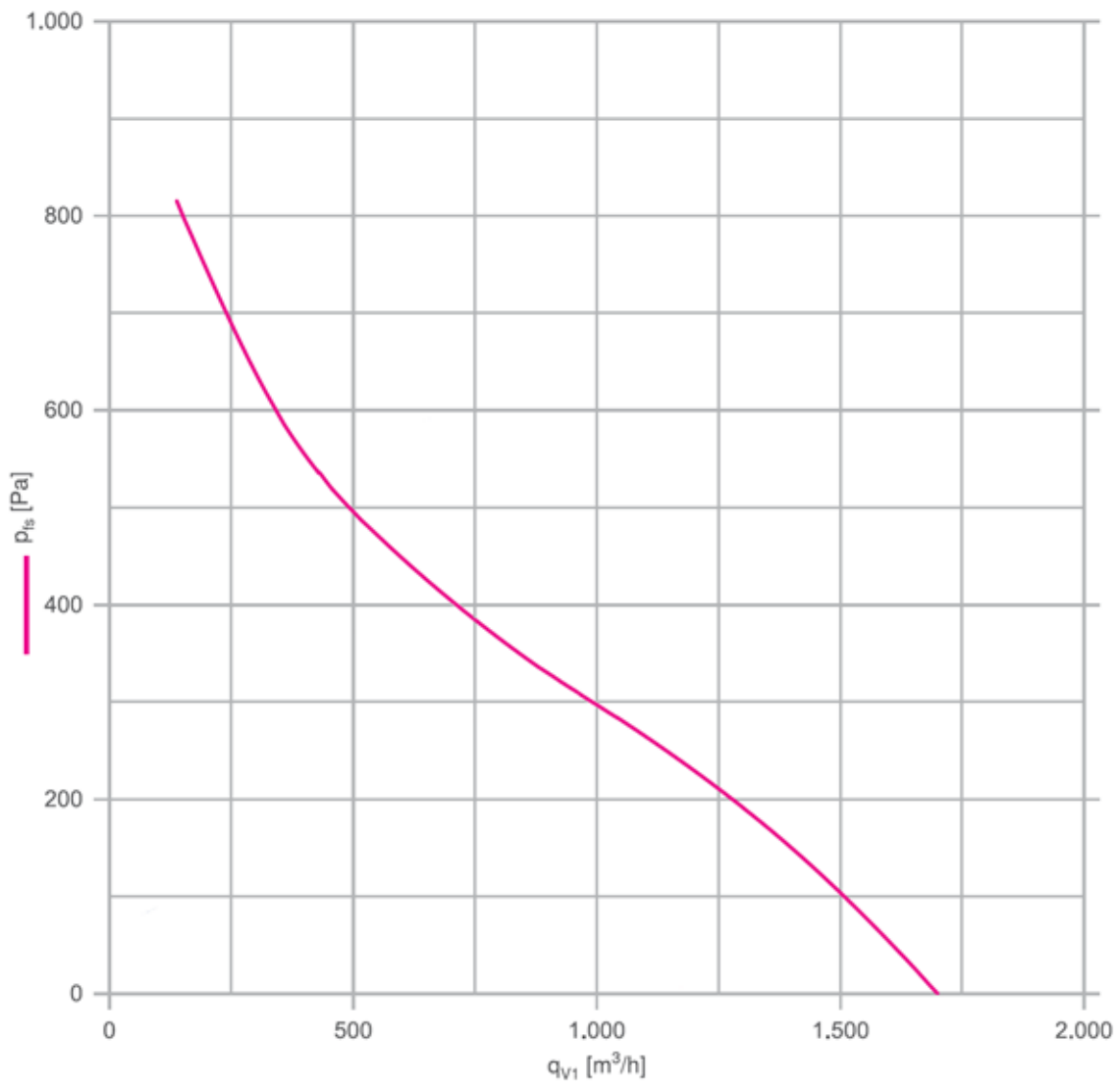
CAPACITY

Air flow m ³ / h	100	500	1000
Cooling Kw	1,0	4,0	9,0
Heating Kw	1,0	4,0	9,0

Static pressure:	800 Pa
Power supply:	230 Vac 50/60 Hz
Power consumption:	30 W (typical) - 170 W (max)
Control:	Data bus rs485 Modbus RTU
Size W x D x H:	444 x 280 x 361 mm
Weight:	9 Kg
Frame:	Stainless steel 316
Air working range:	-20°C to +50°C
Noise:	35 dB (typical) - 70 dB (max)
Vibration:	No significant vibration
Air duct size mm:	2 x 125 mm
Refrigerant pipe:	1/2" Gas 3/8" Liquid
Corrosion protection:	Blygold

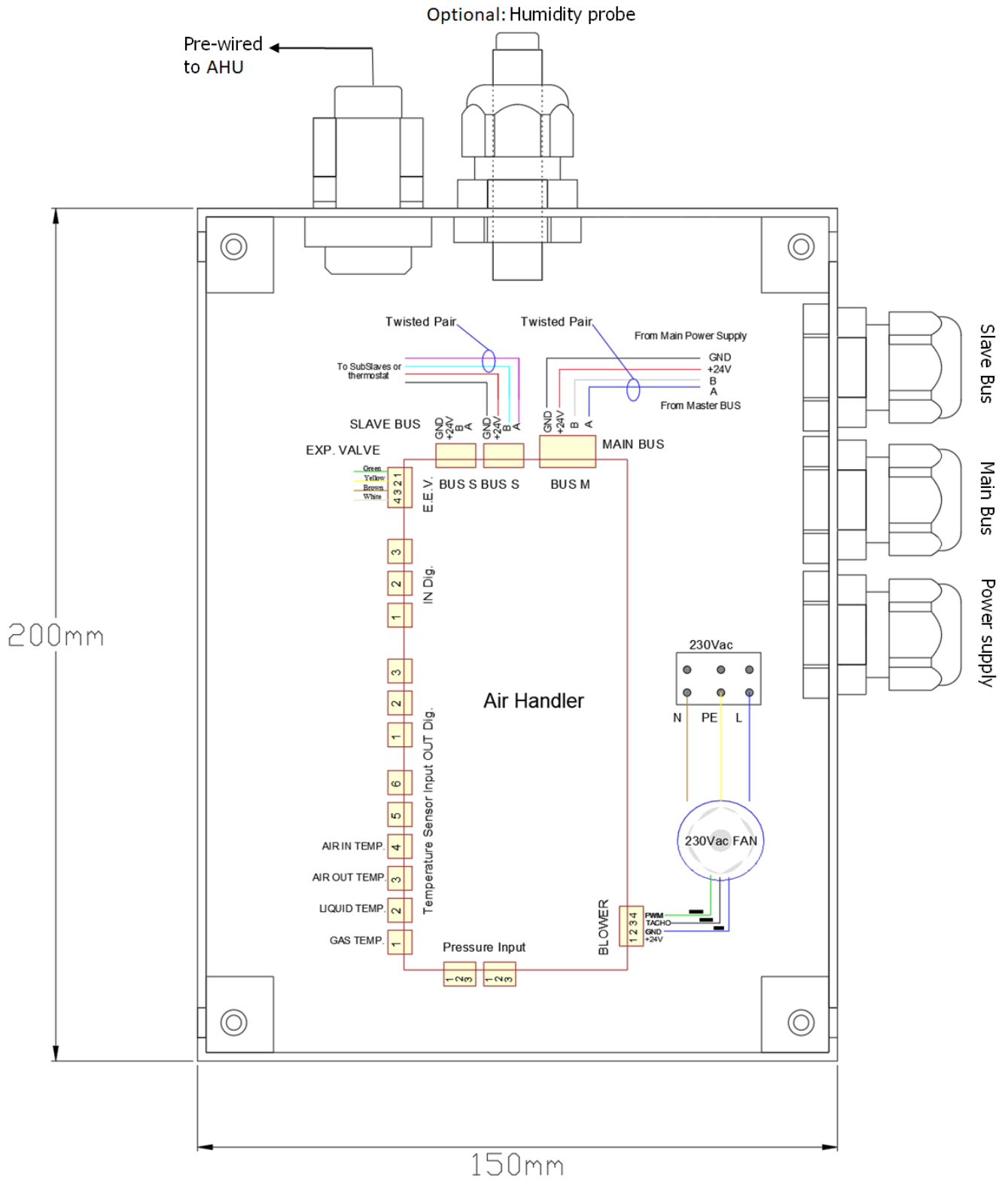
AHU1000T

FAN PERFORMANCE



AHU1000T

ELECTRICAL CONNECTIONS



200mm

150mm

AHU1000T

OVERALL DIMENSIONS

