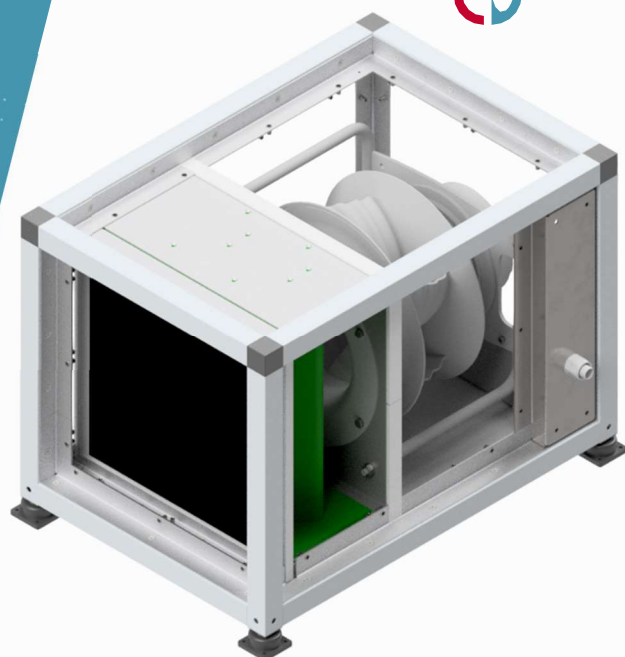


# EXH2000

DATASHEET



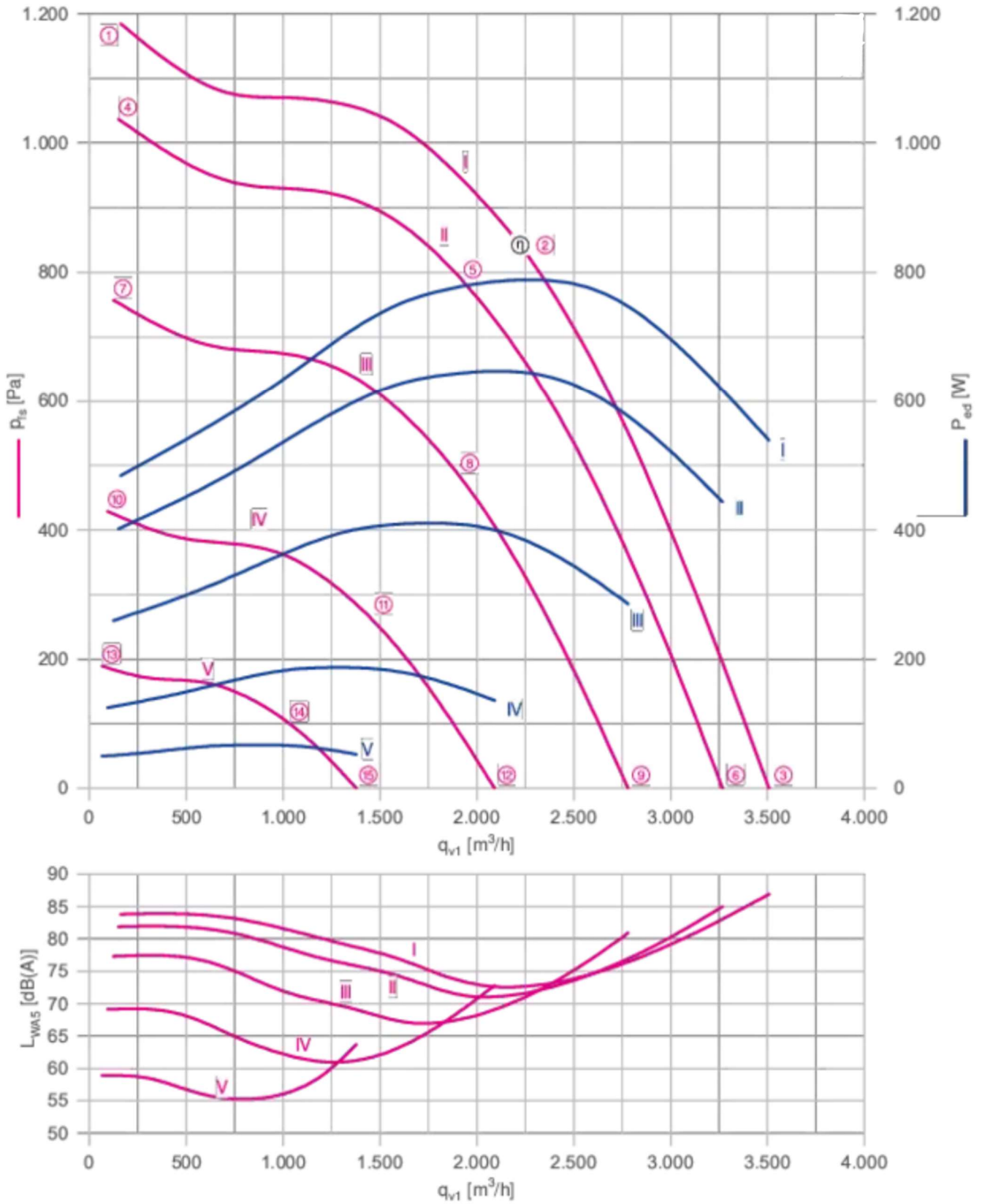
## CAPACITY

Maximum air flow	2000 m <sup>3</sup> / h
------------------	-------------------------

<b>Static pressure:</b>	800 Pa
<b>Power supply:</b>	230 Vac 50/60 Hz
<b>Power consumption:</b>	780 W (max)
<b>Control:</b>	Data bus rs485 Modbus RTU
<b>Size W x D x H:</b>	607 x 497 x 513 mm
<b>Weight:</b>	35 Kg
<b>Frame:</b>	Aluminum silver anodized 30 µm + Stainless steel 316
<b>Vibration:</b>	No significant vibration
<b>Air duct size mm:</b>	custom made

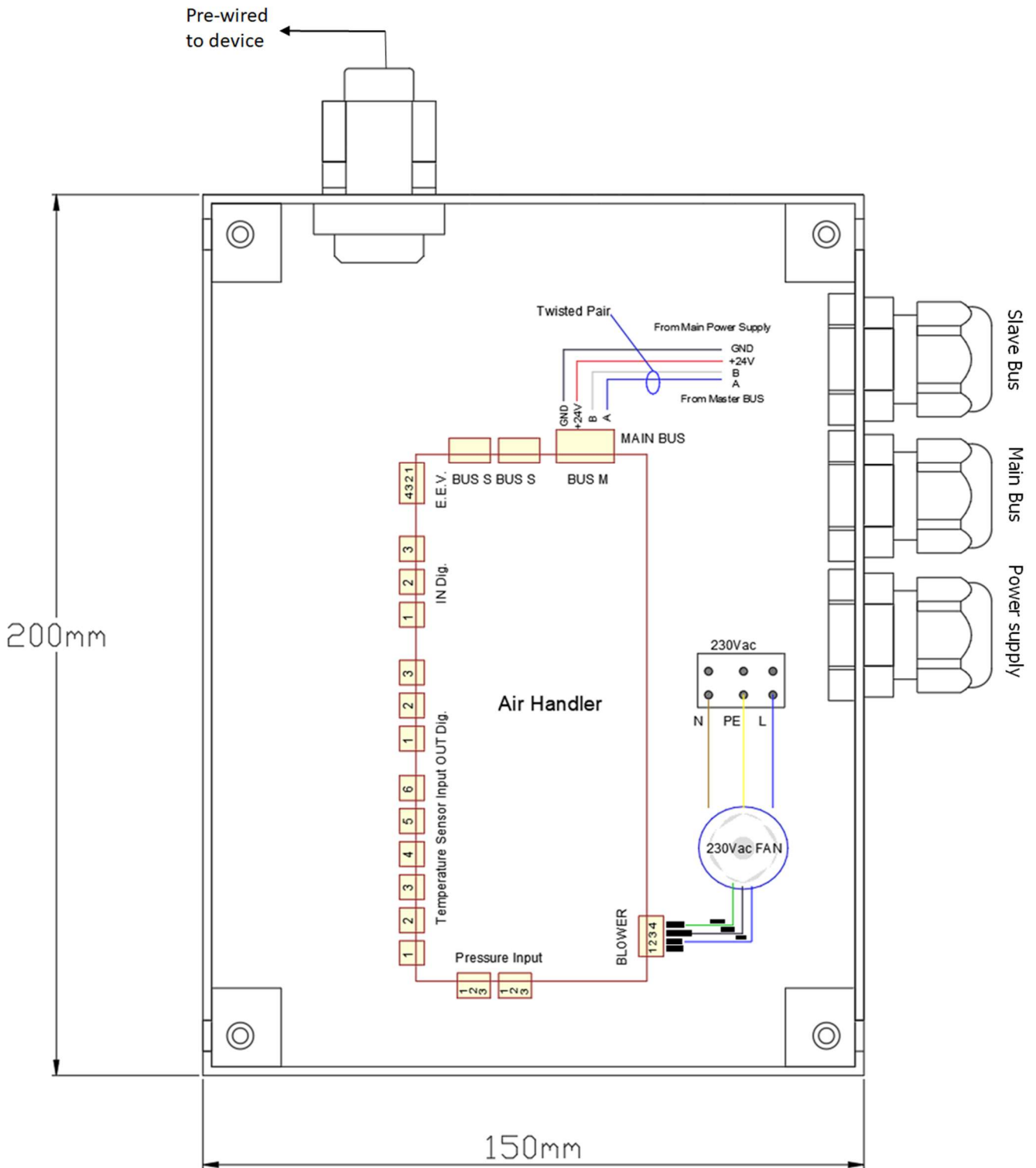
# EXH2000

## FAN PERFORMANCE



# EXH2000

## ELECTRICAL CONNECTIONS



# EXH2000

## OVERALL DIMENSIONS

