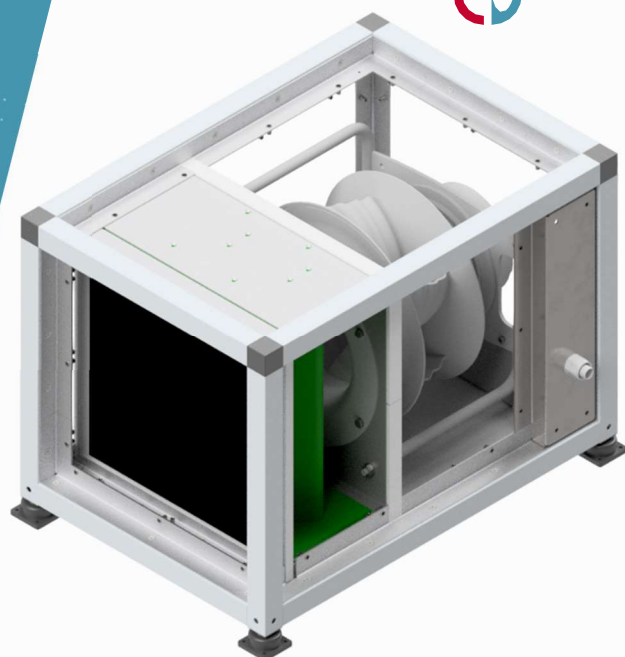


EXH3000

DATASHEET



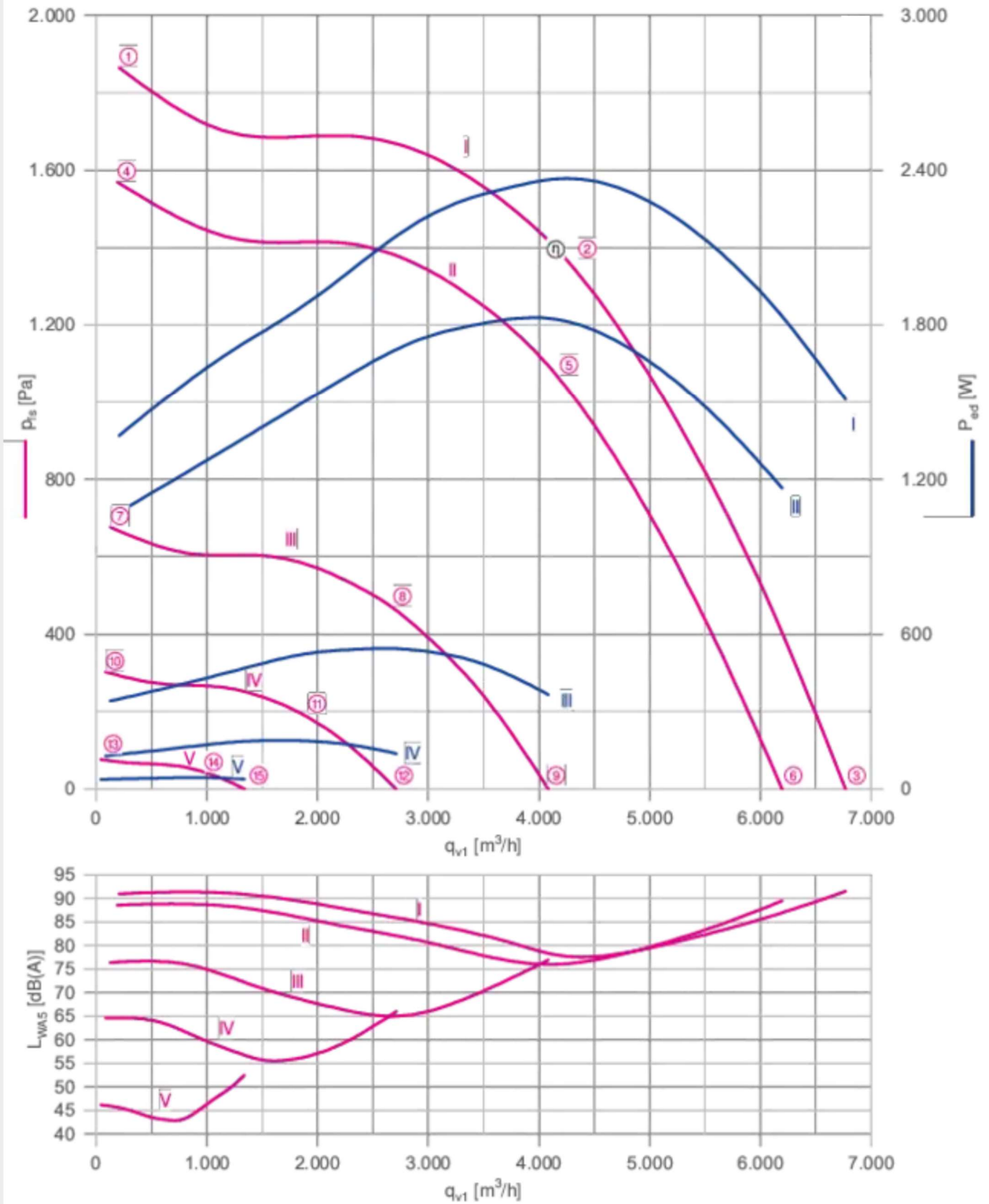
CAPACITY

Maximum air flow	3000 m ³ / h
------------------	-------------------------

Static pressure:	1000 Pa
Power supply:	400 Vac 50/60 Hz
Power consumption:	1500 W (max)
Control:	Data bus rs485 Modbus RTU
Size W x D x H:	692 x 606 x 585 mm
Weight:	39 Kg
Frame:	Aluminum silver anodized 30 µm + Stainless steel 316
Vibration:	No significant vibration
Air duct size mm:	custom made

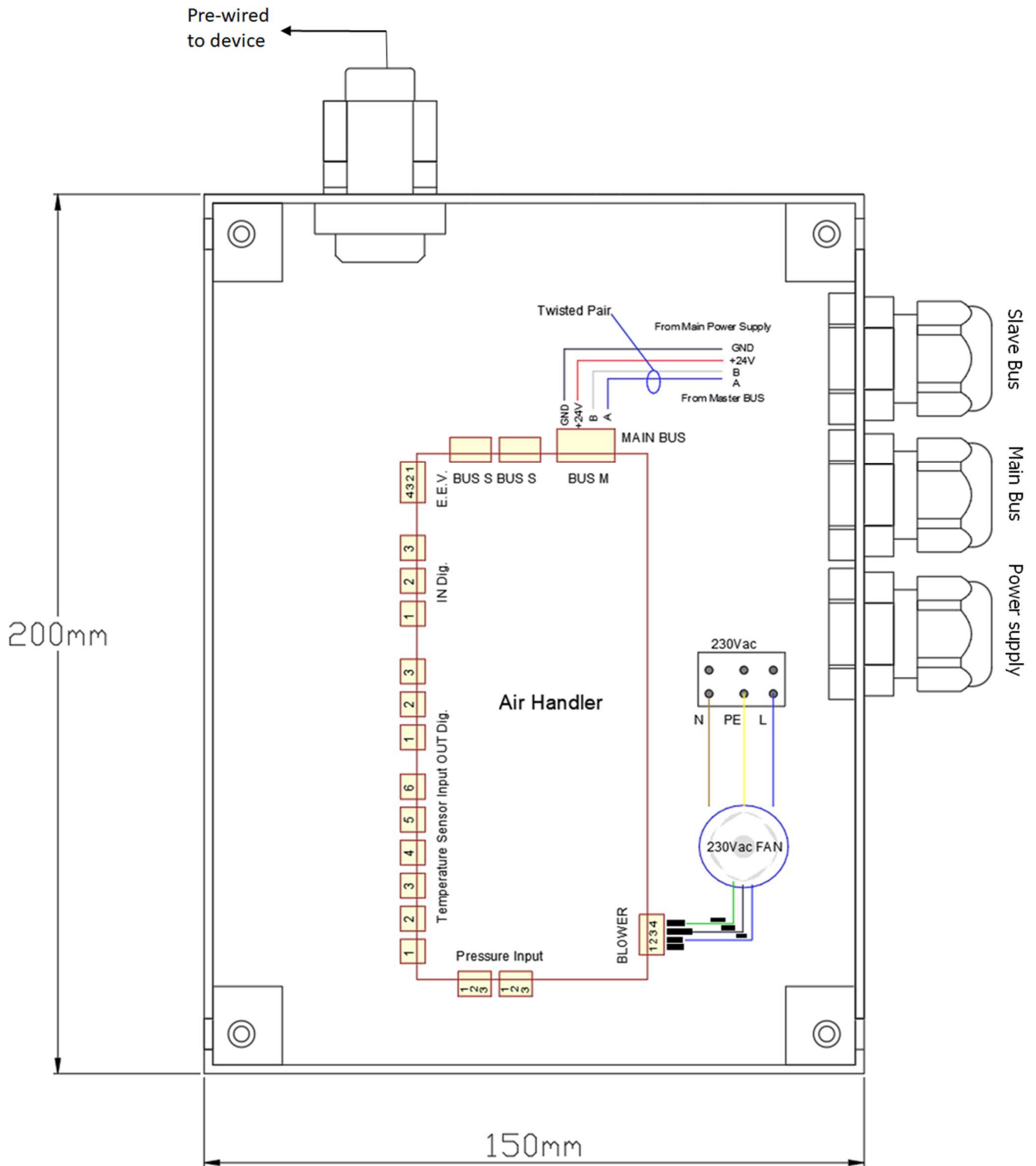
EXH3000

FAN PERFORMANCE



EXH3000

ELECTRICAL CONNECTIONS



EXH3000

OVERALL DIMENSIONS

